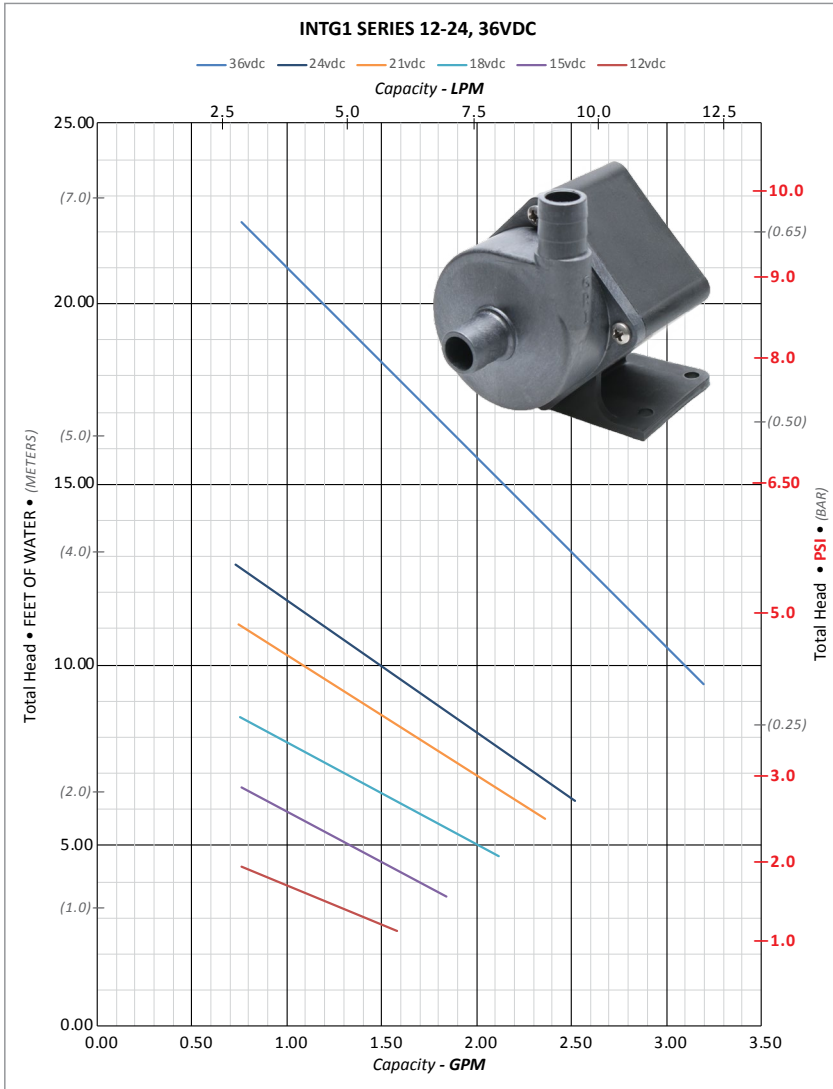


### INTG1 Series • Performance @ Maximum Flow

Voltage	Flow (GPM)	Flow (L)	Ttl. Hd. (Ft)	Ttl. Hd. (PSI)	Ttl. Hd. (BAR)	Ttl. Hd. (M)
36vdc	3.20	12.10	9.49	4.11	0.28	2.89
24vdc	2.50	9.50	6.26	2.71	0.19	1.91
21vdc	2.36	8.92	5.76	2.50	0.17	1.76
18vdc	2.12	8.02	4.73	2.05	0.14	1.44
15vdc	1.84	6.98	3.58	1.55	0.11	1.09
12vdc	1.58	5.98	2.65	1.15	0.08	0.81



Note: Testing performed in a controlled laboratory environment. Actual performance may vary (+) or (-) 10% from the information shown.  
**Do Not Run Pumps Dry. Pumps must be in a continuous flooded suction environment.**

### Specifications

<b>Maximum System Pressure:</b> 50 psi
<b>Approximate Weight:</b> .8 LBS (362.9 grams)
<b>Ports:</b> 1/2" MHB, 3/8" MPT OEM Customization Available

### Materials In Contact With Solution

<b>Body:</b> PPS	<b>Impeller Shaft:</b> Stainless Steel or Ceramic
<b>Impeller:</b> PPS	<b>Housing:</b> PPS
<b>Static O-Ring:</b> EPDM, FKM	

### Motor Specifications

<b>Motor:</b> Integrated, Brushless DC
<b>Supply Voltage:</b> 12-24, 36 VDC
<b>Electronics Maximum Power:</b> 18 Watts To protect the control board, each Integrity Series pump will be issued with a Maximum Power limit (Watts). To stay within this limit, the recommended fuse size (Amps) will be based on the voltage supplied. (Watts = Voltage X Amps)

### Control Options

- **Direct Supply Voltage:** Speed of the pump determined by the voltage supplied
- **Analog:** 0-5v DC signal
- **Tachometer:** Feedback option available

### Maximum Fluid Temperature Rating Chart

Controller Position	Maximum Fluid Temp Rating
Separate from pump	Not Available
Within pump's housing	149°F (65°C)
Various factors influence the recommended maximum temperature rating. These factors play a role in determining the pump's life and applied warranties. In some applications, a higher maximum fluid temperature rating may be warranted.	Factors influencing maximum temperature rating include, but are not limited to: <ul style="list-style-type: none"> <li>• Starting temperature of fluid in system</li> <li>• Ambient temperature</li> <li>• Required performance, application's specifications</li> <li>• Run time</li> </ul>

### Optional Agency Approvals

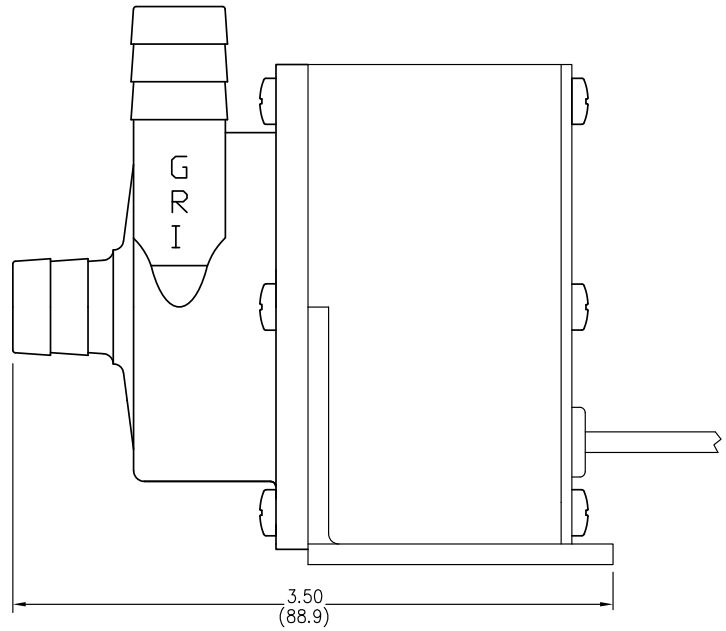
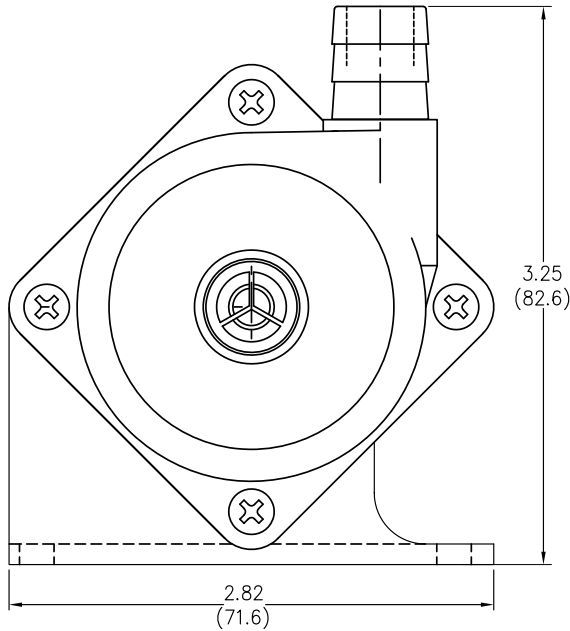
**UL778:** Motor-Operated Water Pumps  
**NSF 169:** Food Grade  
**NSF372:** Lead Content (1/2" only)

### RoHS/REACH

Many GRI pumps are RoHS & REACH compliant. For declarations by specific model numbers, please contact GRI.

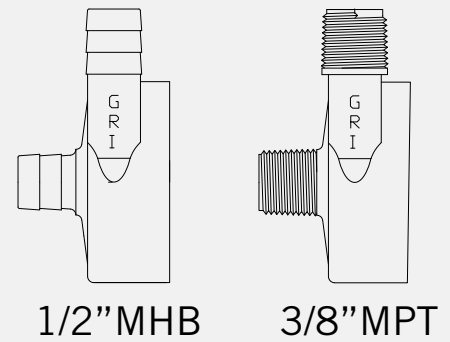
### IP (Ingress Protection)

**IP68:** No ingress of dust, protection against continuous water immersion.\*  
 \* Upon request only. Minimum quantities may be required.



INTG1 Series Typical Dimensional Drawing.  
 Many other OEM port options and configurations are available. Please contact GRI to discuss.

## Port Options



1/2" MHB

3/8" MPT

Integrity Series Pumps are designed and manufactured specifically for OEM customization. If you don't immediately find a pump that meets your exact requirements, our dedicated Pump Team is ready to work with you in developing a solution specific to your application.

INTG1 SERIES MODELS				Ports Inches	Max Flow GPM (LPM)	Max Head Ft. (PSI) (m)	Voltage (VDC)
EPDM O-Ring		FKM O-Ring					
2 wire: (+), (-)	3 wire: (+), (-), Speed Control	2 wire: (+), (-)	3 wire: (+), (-), Speed Control				
INTG1S-280	INTG1S-380	INTG1S-281	INTG1S-381	1/2" MHB	2.50 (9.50)	12.80 (5.5) (3.90)	12-24
INTG1S-284	INTG1S-384	INTG1S-285	INTG1S-385	3/8" MPT			

Connectors: MHB = Male Hose Barb; MPT = Male Pipe Thread | O-Ring Material: EPDM = Ethylene Propylene Diene Monomer, FKM = Fluoroelastomer.